

Warehouse 2.0: AI, Automation, and Robotics Reshaping the Future



Kent Olsson
CEO
Consafe Logistics



Claes Jönsson
Solution Expert
Consafe Logistics

An aerial photograph of a coastal landscape. A large, white sand dune dominates the foreground and middle ground. A single, dark green tree stands on the crest of the dune. The dune is surrounded by clear, turquoise water. In the distance, a small boat is visible on the horizon. The sky is a pale blue with some light clouds. The overall scene is serene and natural.

THE ERA OF POLYCRISIS

THE EFFECTS OF INFLATION

A conceptual image illustrating the effects of inflation. A person is shown from the side, struggling to carry a large, heavy, reddish-brown block on their back. They are walking up a steep, rocky, and uneven path. The sky is a dramatic mix of deep blue, purple, and orange, suggesting a sunset or sunrise. The overall mood is one of hardship and the burden of economic pressure.



RAPID DEVELOPMENT AND ADOPTION OF NEW TECHNOLOGY

THE NEW LANDSCAPE

- SMALLER INVESTMENTS WITH FASTER ROI
- SCALABLE & FLEXIBLE SOLUTIONS TO MANAGE DISRUPTIONS
- FROM 'WHEN IT WORKS DON'T TOUCH IT'
TO 'CONTINUOUS IMPROVEMENTS'
- INCREASED INVESTMENTS INTO BROWNFIELD OPTIMIZATIONS
- MID-TERM SHORTAGE OF WAREHOUSE CAPACITY IN SOME
SEGMENTS



AI | ROBOTICS | DIGITAL TWIN | HUMANS





AI IS THE NEW ELECTRICITY

AI IN THE WAREHOUSE

- Efficient order fulfillment
- Real-time and predictive decision-making
- Data-driven insights



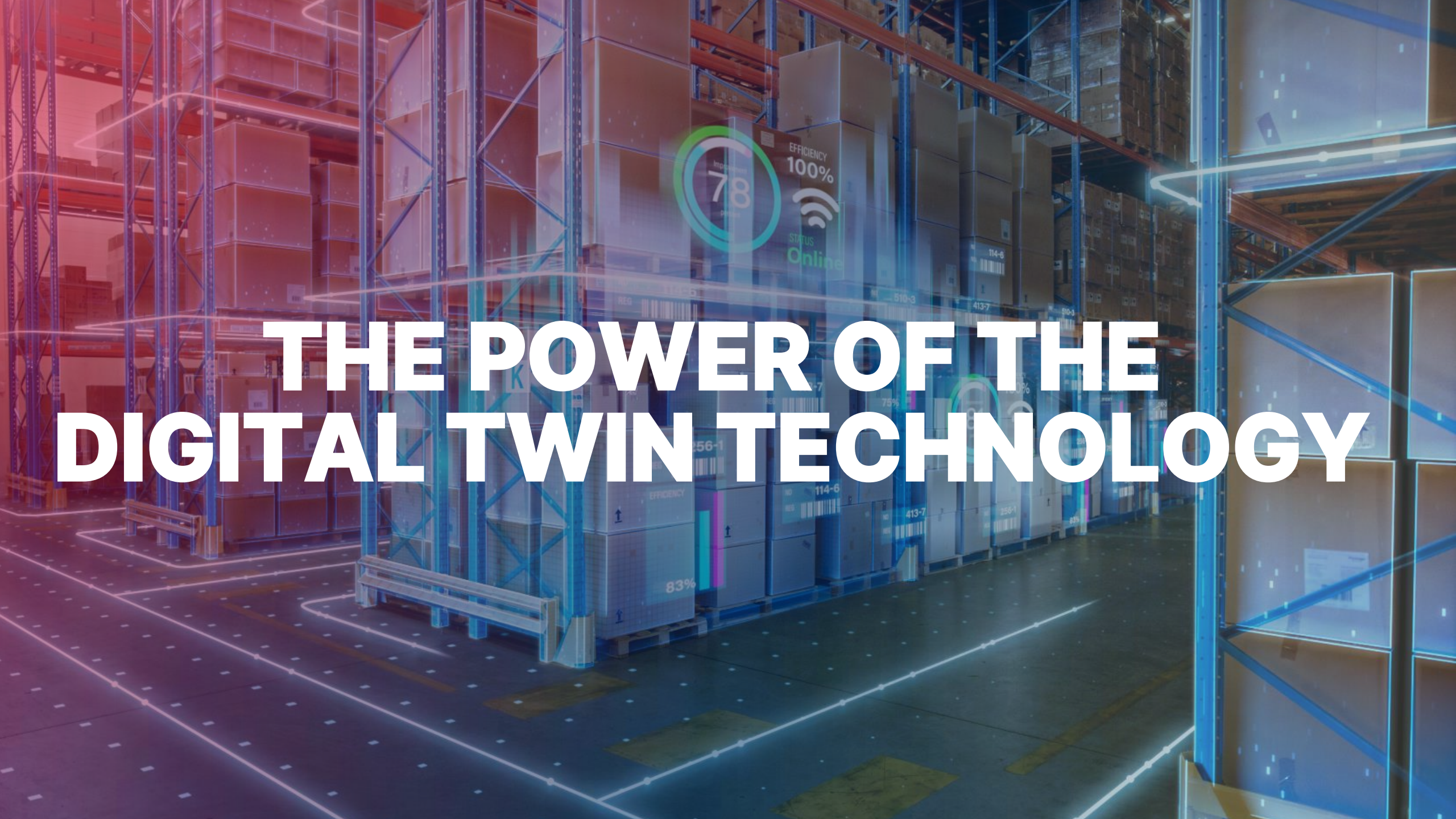
A yellow robotic arm is shown in the foreground, holding a large cardboard box. The background is a blurred warehouse interior with high shelves and various boxes. The image has a blue and red color overlay.

THE RISE OF FLEXIBLE WAREHOUSE ROBOTICS



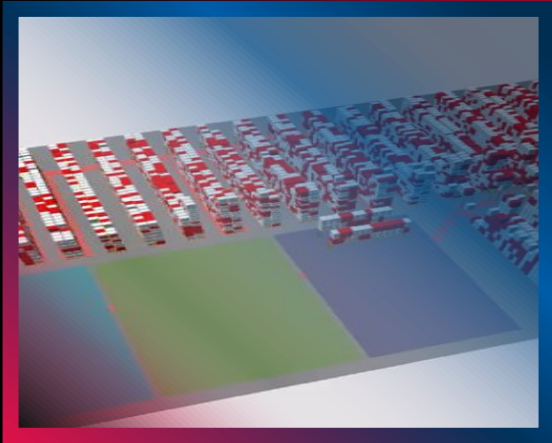
ROBOTICS IN THE WAREHOUSE



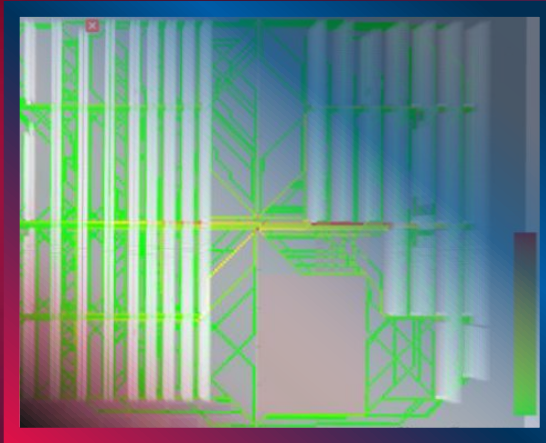


THE POWER OF THE DIGITAL TWIN TECHNOLOGY

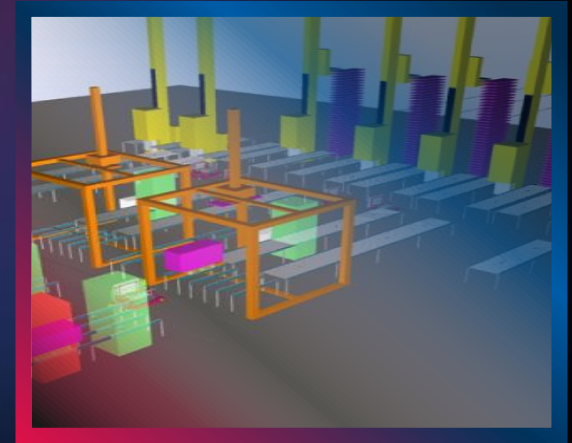
DIGITAL TWIN TECHNOLOGY IN THE WAREHOUSE



Visualization

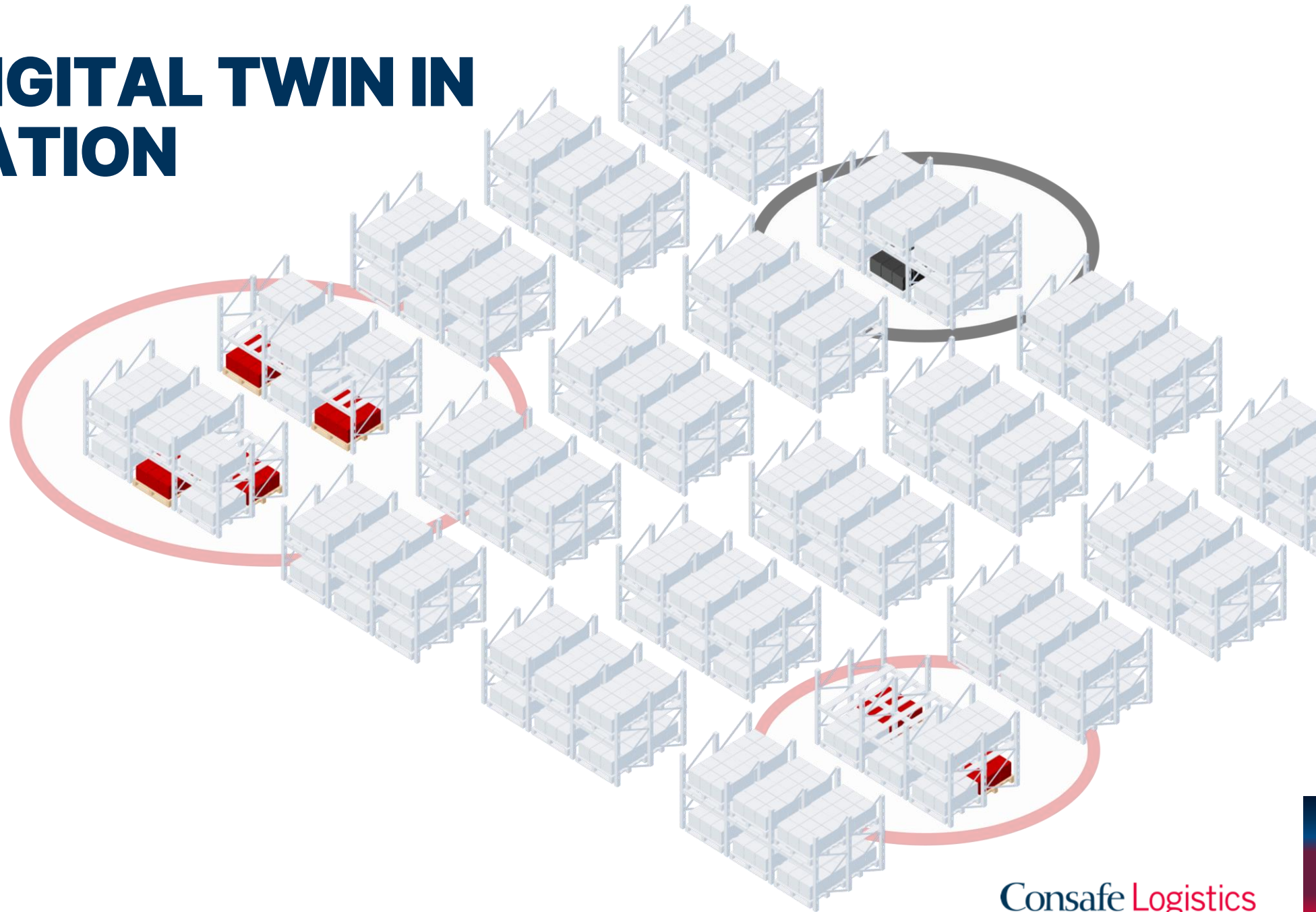


Simulation



Emulation

AI AND DIGITAL TWIN IN COMBINATION



A black and white photograph of a crowded elevator. Several people are visible, including a man in a uniform with 'ELEVATOR' on his cap, a woman in a hat, and a man in a suit. The image has a red overlay on the left side. The text 'ARE WE READY TO EMBRACE THIS RAPID DEVELOPMENT?' is overlaid in white, bold, sans-serif font.

**ARE WE READY TO EMBRACE
THIS RAPID DEVELOPMENT?**

ADAPTING TO CHANGE



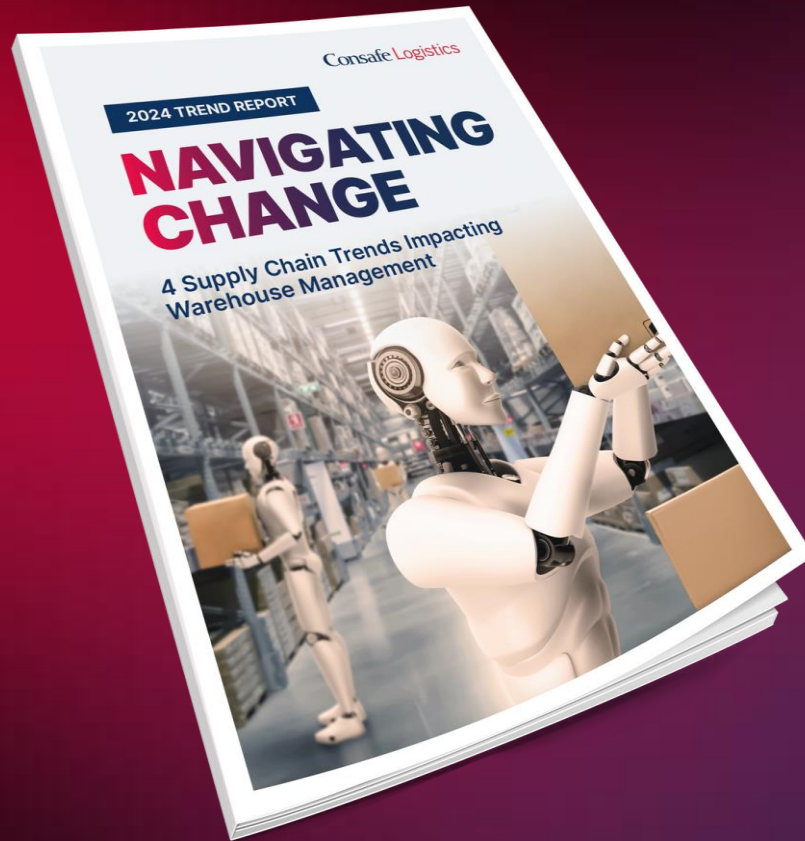
UPSKILLING & RESKILLING

- **Change Management and ensure your people feel safe**
- **New competencies will be needed**
- **Successful upskilling and reskilling are key to succeed**

KEY TAKEAWAYS

- **AI and robotics will transform the warehouse as we know it**
 - **Increasing investments in AI and automation**
 - **Smaller investments and continuous improvements**
 - **Scalable and flexible solutions are key**
- **There is a strong need for upskilling, reskilling, and change management**

DOWNLOAD OUR 2024 TREND REPORT



SCAN TO DOWNLOAD



The background features a dark gradient from deep purple to navy blue. It is decorated with thin, light-colored lines that intersect at small circular dots, forming a network-like pattern. One dot is located in the upper right quadrant, and another is in the lower left quadrant.

Questions?

Consafe Logistics